

Results and Lessons Learned



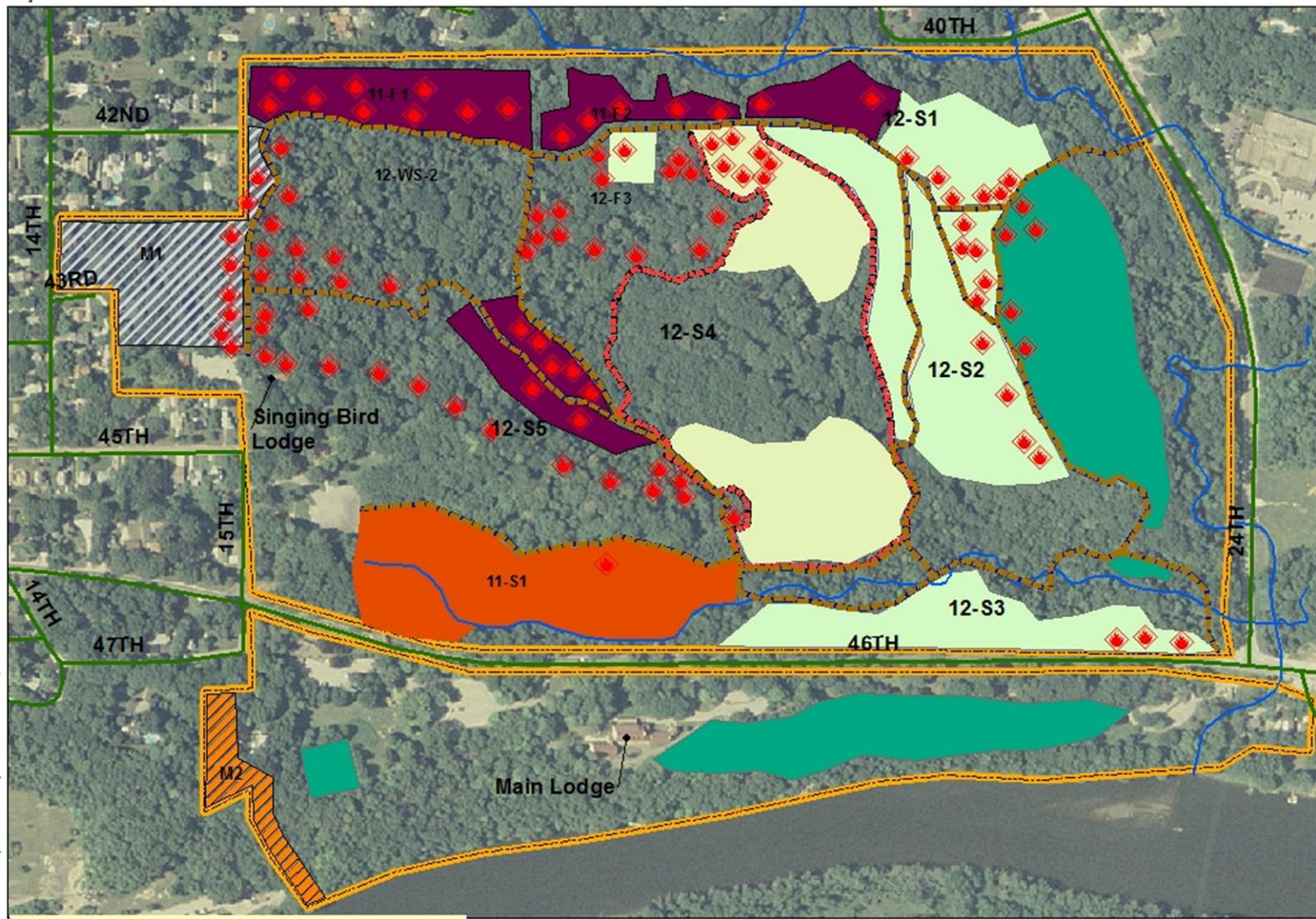
No, it's not lunch yet

Blackhawk SHS

Project Accomplishments 2009-2013

- ◉ 68 acres Rx fire 2010-2012
- ◉ 103 separate bonepile burns
- ◉ Fuels treatments on 105 acres
- ◉ 12,500 feet of trails reopened (primary firebreaks) and new line constructed
- ◉ Over 1200 volunteer and in-kind match hours donated
- ◉ Two NWCG fire training classes (40-hour Basic WWFF, Ignitions Ops)

Blackhawk SHS Rx Burns and Fuel Treatments



Map created by Matt Schramm, Interstate RC&D 01/12/13

Legend

- Bonepiles
- Fall 2009 Burn
- 11_12 Spotfire
- Blackhawk SP Trails
- Blackhawk boundary
- Blackhawk Foot Trails
- Fall 2011 Burn actual
- Spring 2011 Rx fire unit
- Spring 2012 burn actual

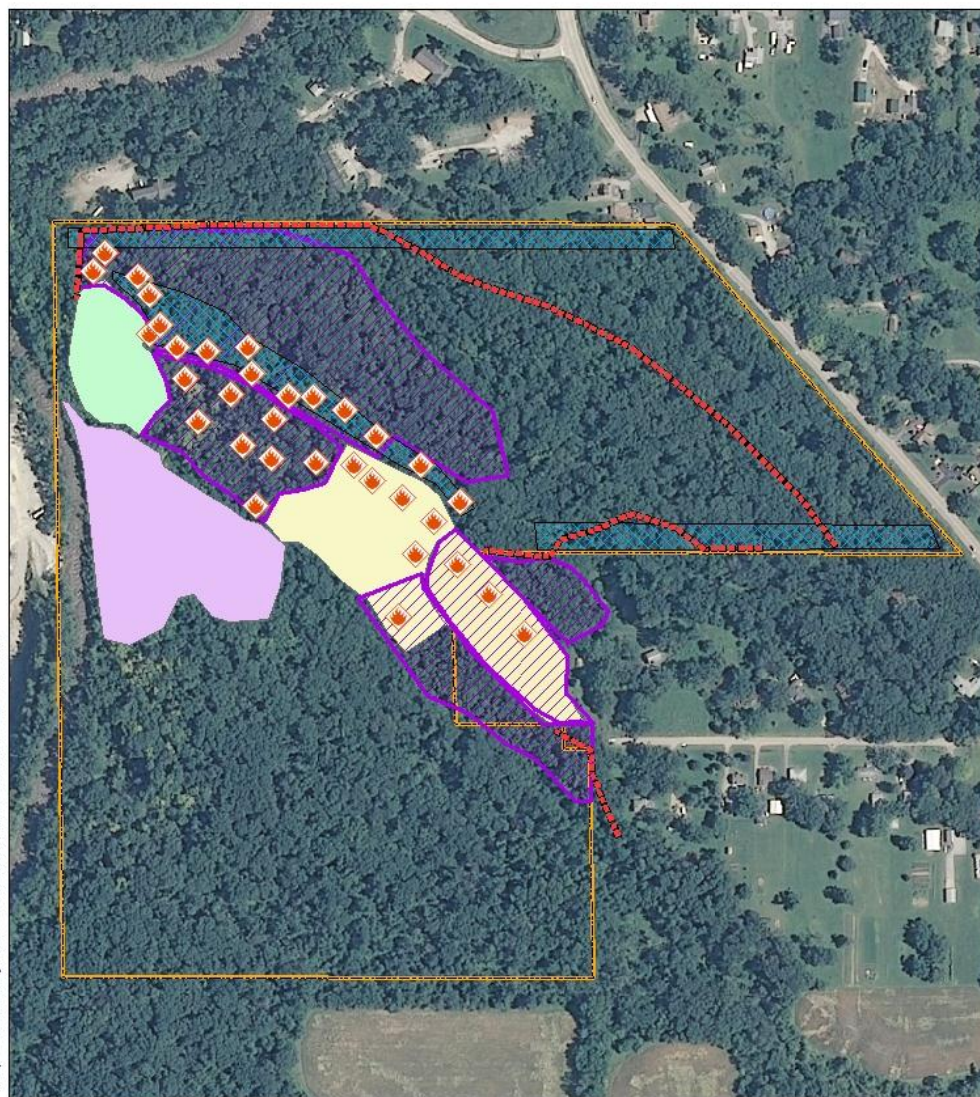
1:5,000





Collinson-Lindhal Preserves Rx Fires and Fuel Treatments

Map Created by Matt Schramm, Interstate RC&D 1/13/12



Legend

- | | |
|-----------------------------------|------------------------|
| Bonepiles | 11_6_2010 Rx Fire Unit |
| Summer 2011 Fireline Work | Fall2012_Rx Fire Unit |
| Summer 2011 Mechanical Treatments | C&JL Boundary |

1:4,000

0 250 500 1,000 Feet

Collinson-Lindahl Preserves Project Accomplishments 2010-2013

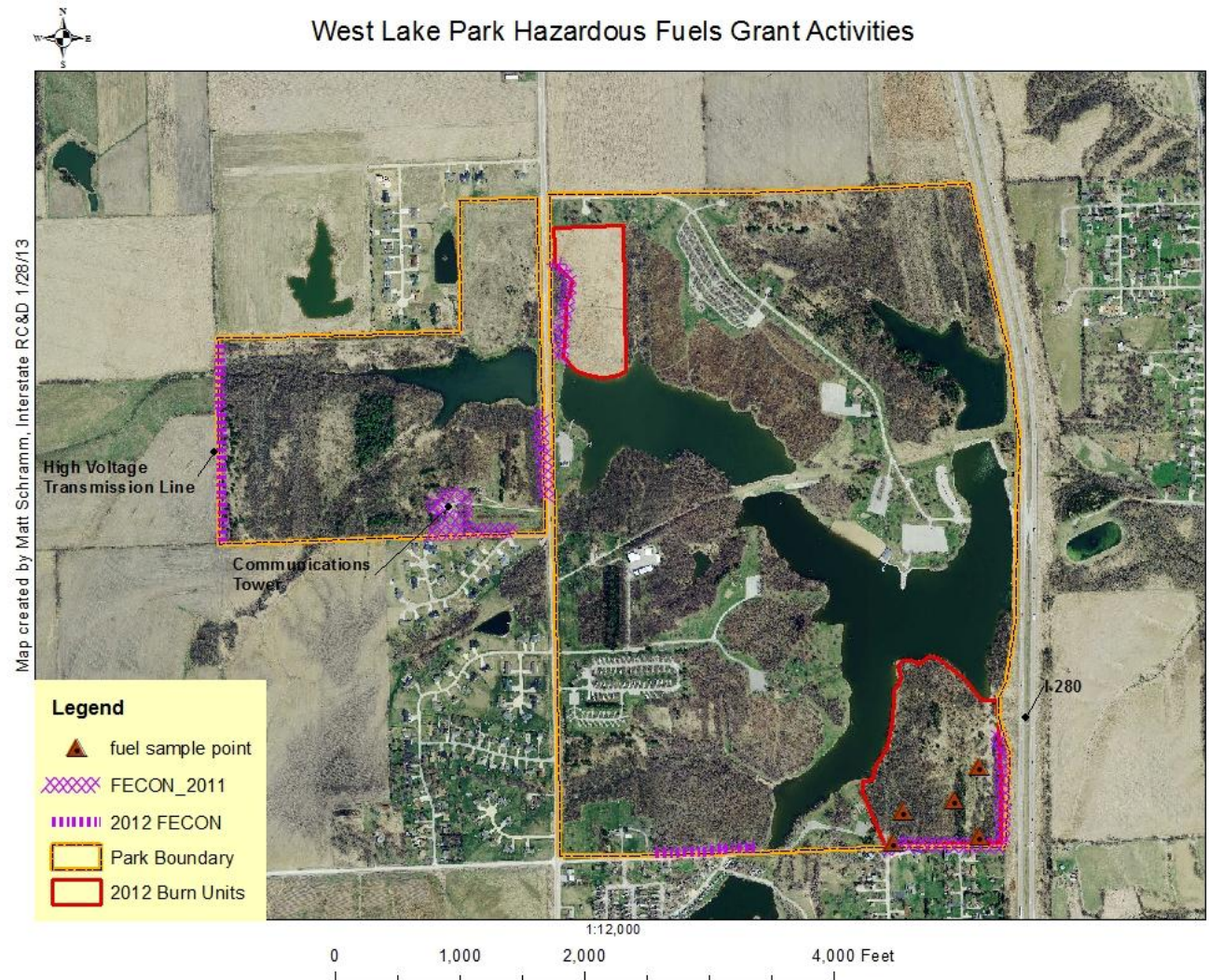
- ◎ 28 acres Rx fire 2010-2012
- ◎ 33 separate bonepile burns
- ◎ Fuels treatments on 25 acres
- ◎ 7,200 feet of trails reopened (primary firebreaks) and new line constructed
- ◎ Over 500 volunteer and in-kind match hours donated
- ◎ Fire-in-the-Hills Workshop, November 2010

West Lake Park Accomplishments 2010-2012

7800' primary
burn break
constructed
using FECON in
2011 and 2012

14 acres Rx fire
Spring 2012

15 acres
additional fuels
treatments



Lesson #1:
Need to
Integrate Fuel
Treatments
and
Restorative Rx
Fire



WUI Forest Restoration Projects Should:

- ◉ Clearly define outcomes and desired future conditions for treatment units
- ◉ Cross-walk the process (what exactly is “hazardous” fuel?)
- ◉ Acknowledge system complexities and dynamics (along with our limited ability to influence them)
- ◉ Plan for resiliency in both forest health and human management of forests



Monitoring Success...or Not



Fire Effects Monitoring and
Inventory System v.2.1.2

Joint Fire Science Program

www.fire.org/firemon



Lesson #2 (actually #1): **FIRE IS FIRE**

◎ QUIZ Time: SFFO #3

> Fire weather

- Forecasts (Zone, Point, Spot)
- Local Wx
- Know what it means for your WUI site

> Fire behavior

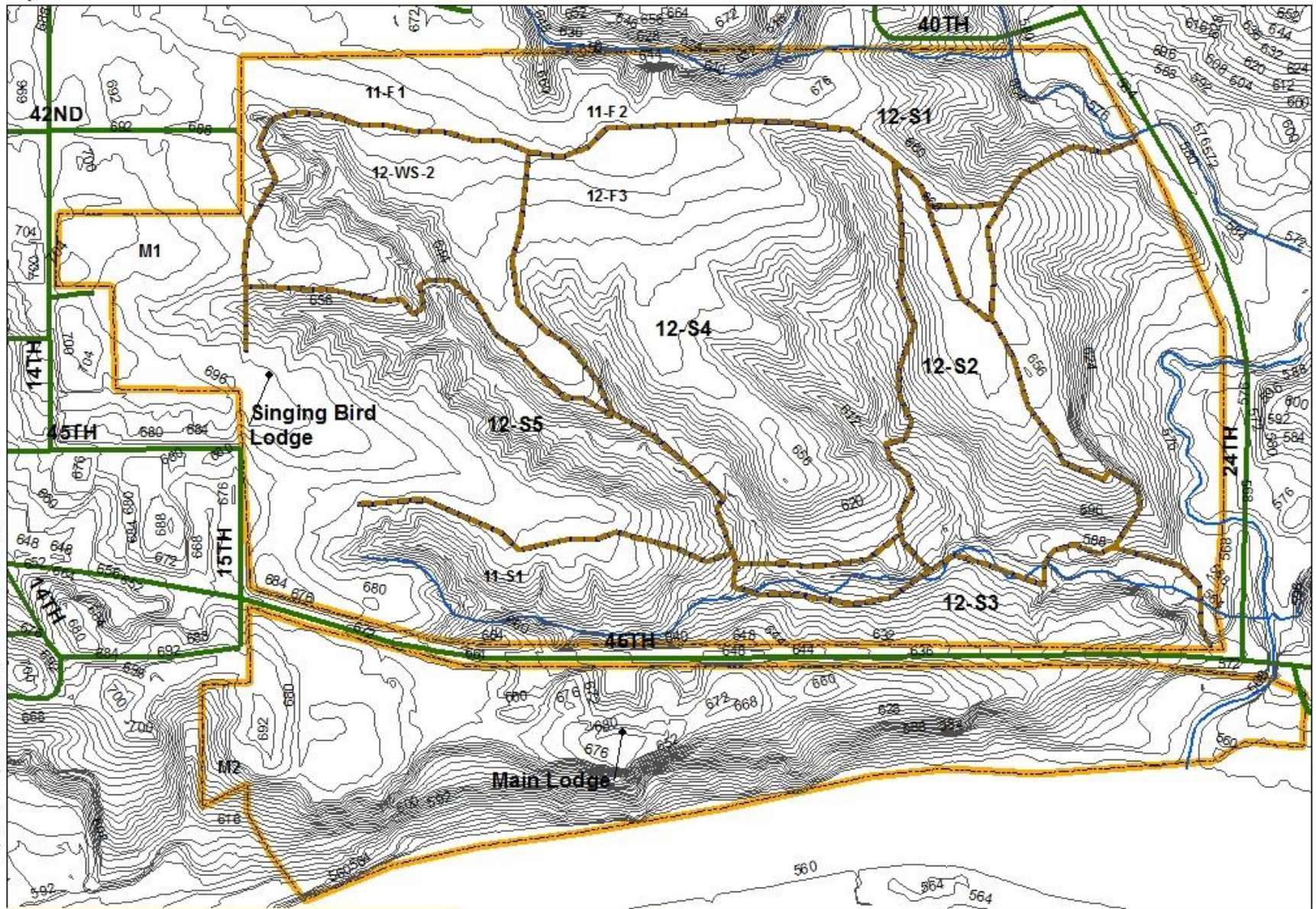
- Know your fuels and how they behave in space and over time
- Small doesn't mean "safe" or easy

> Expect the unexpected; plan for needed resources and capabilities to respond to rapid change on the fireline

- Corollary: plan to lose resources at critical points during the burn day



Blackhawk SHS Topography



Map created by Matt Schramm, Interstate RC&D 01/12/13

Legend

- Blackhawk Foot Trails
- Blackhawk boundary
- Blackhawk SP Trails
- rico_streets

1:5,000

0

500

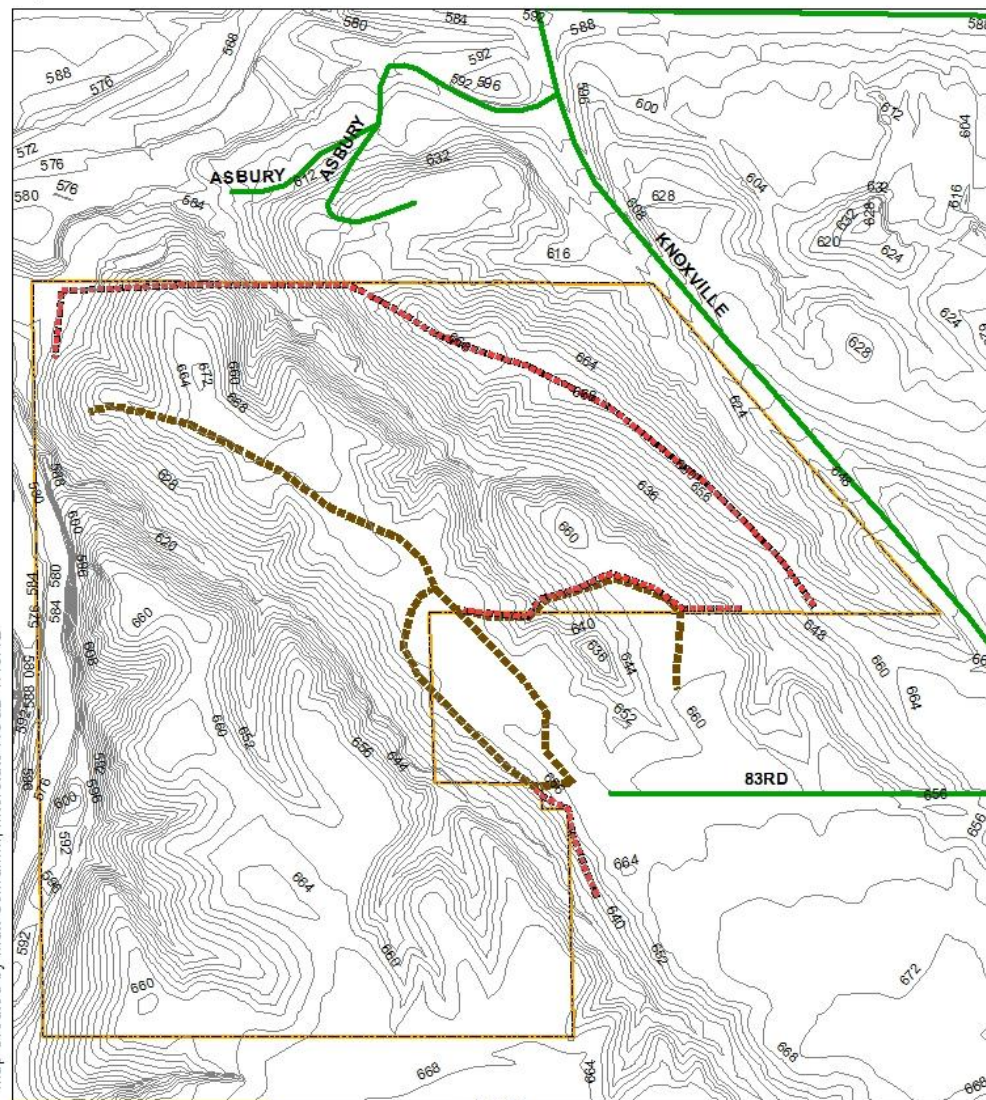
1,000

2,000 Feet



Collinson-Lindhal Preserves Topography

Map Created by Matt Schramm, Interstate RC&D 1/13/12

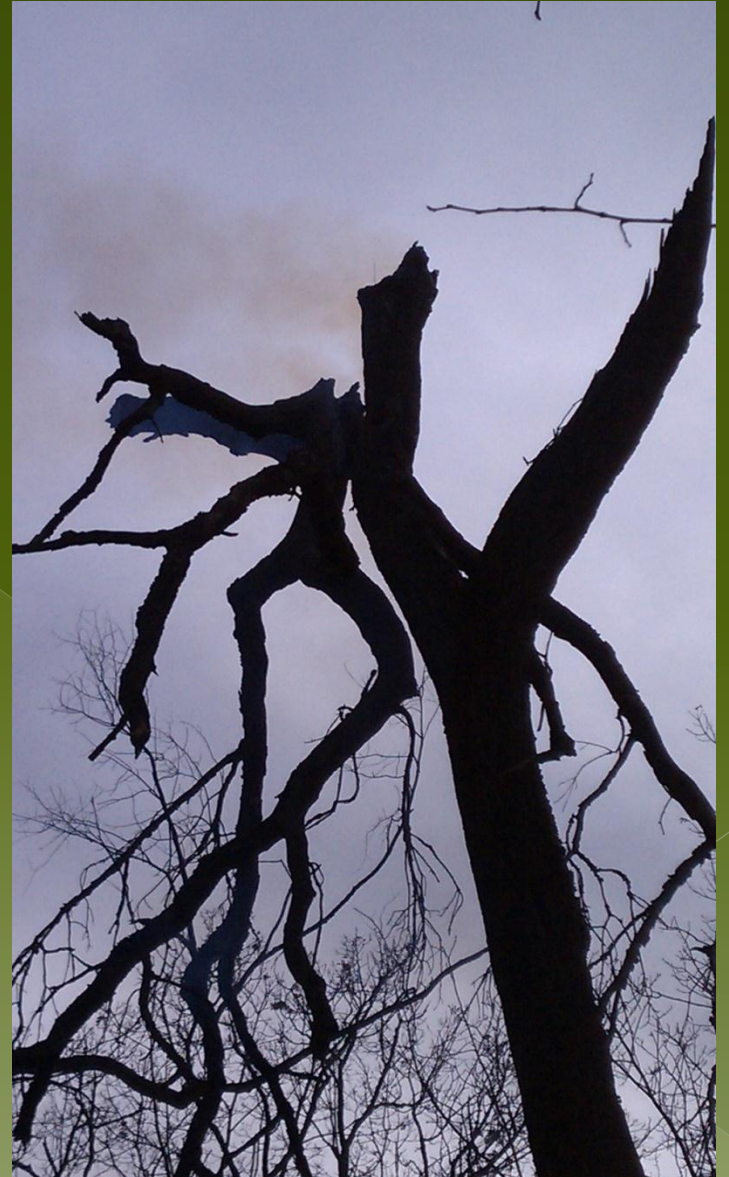


Legend

- rico_streets
- contours4ft
- Summer 2011 Fireline Work
- - - C.J.L. Boundary

0 250 500 1,000 Feet

A few special words on snags....



.....and Jackpots



Lesson # 3: Smoke is a Critical Factor in a WUI Environment



In the WUI, One Must Always Choose the Lesser of Two Weevils


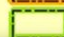


Hazardous Fuels in the Quad Cities WUI USFS Grant 10-IL-329



Map created by Matt Schramm, Interstate RC&D 01/12/13

Legend

-  Blackhawk boundary
-  CJL Boundary

1:60,000



Smoke Management Tips

- ◉ Put trained eyes on it (not necessarily your own)
- ◉ Know local weather patterns and how they can affect smoke dispersion
- ◉ Ignition tactics and smoke production
 - > Can you shut it down if needed?
 - > Can you burn under different fire weather conditions?
- ◉ Don't forget public relations

Lesson #4:

The Public Doesn't "Get" Rx Fire (or so we think)

- ◉ Designate a PAO for your Rx fire and be prepared to deal with the media
- ◉ Make sure you have your ducks in a row with permits, local fire department buy-in, and neighbor notifications
- ◉ Advance face-to-face contact often works best with the public



Lesson #5: WUI fuel reduction burns are resource intense and often entail significant risk



Know when to say “no”



Plan for Multiple-day Operations, but Don't Sweat the Small Stuff....



Lesson #6:

Know the limitations of your crew

- Volunteers can effectively supplement core overhead staff....but consider
 - › Work/school/family commitments
 - › Physical abilities and stamina
 - › Technical training
 - › Crew turn-over
 - › Funding for equipment and supplies
- Take care of your crew



Use the Opportunity to Mentor and Educate the Next Shift

